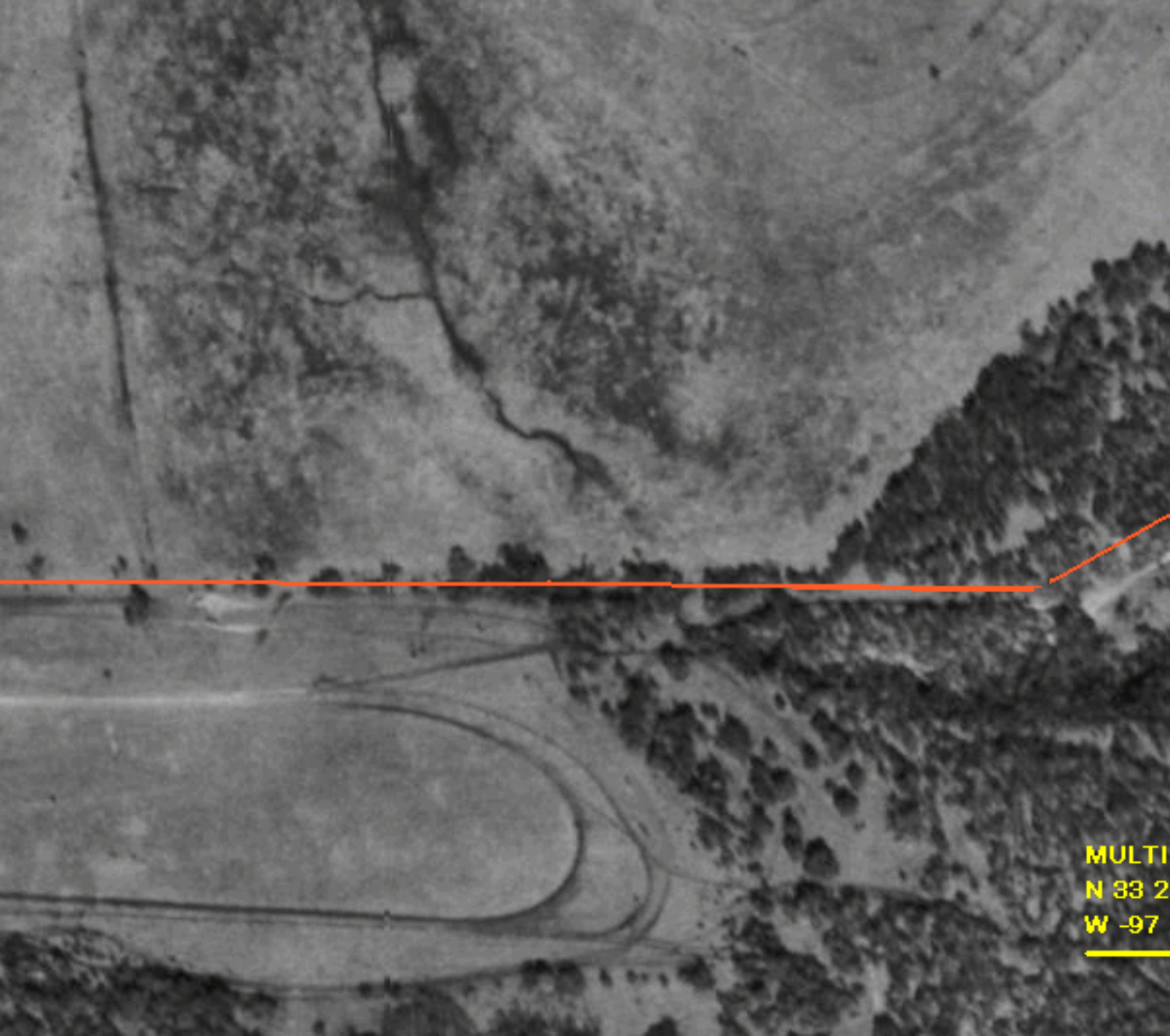


An aerial photograph showing a landscape with a road, a field, and a wooded area. A green point is marked on the road. A yellow line forms a 'Z' shape, starting from the top left, going right, then down-left to the green point, then up-right to the top right. A red line is horizontal, passing through the green point. Another red line is diagonal, starting from the green point and going down-right. A cyan line is at the bottom right corner.

PERIMETER
N 33 25" 54'
W -097 22" 20'



MULTI
N 83 2
W -97

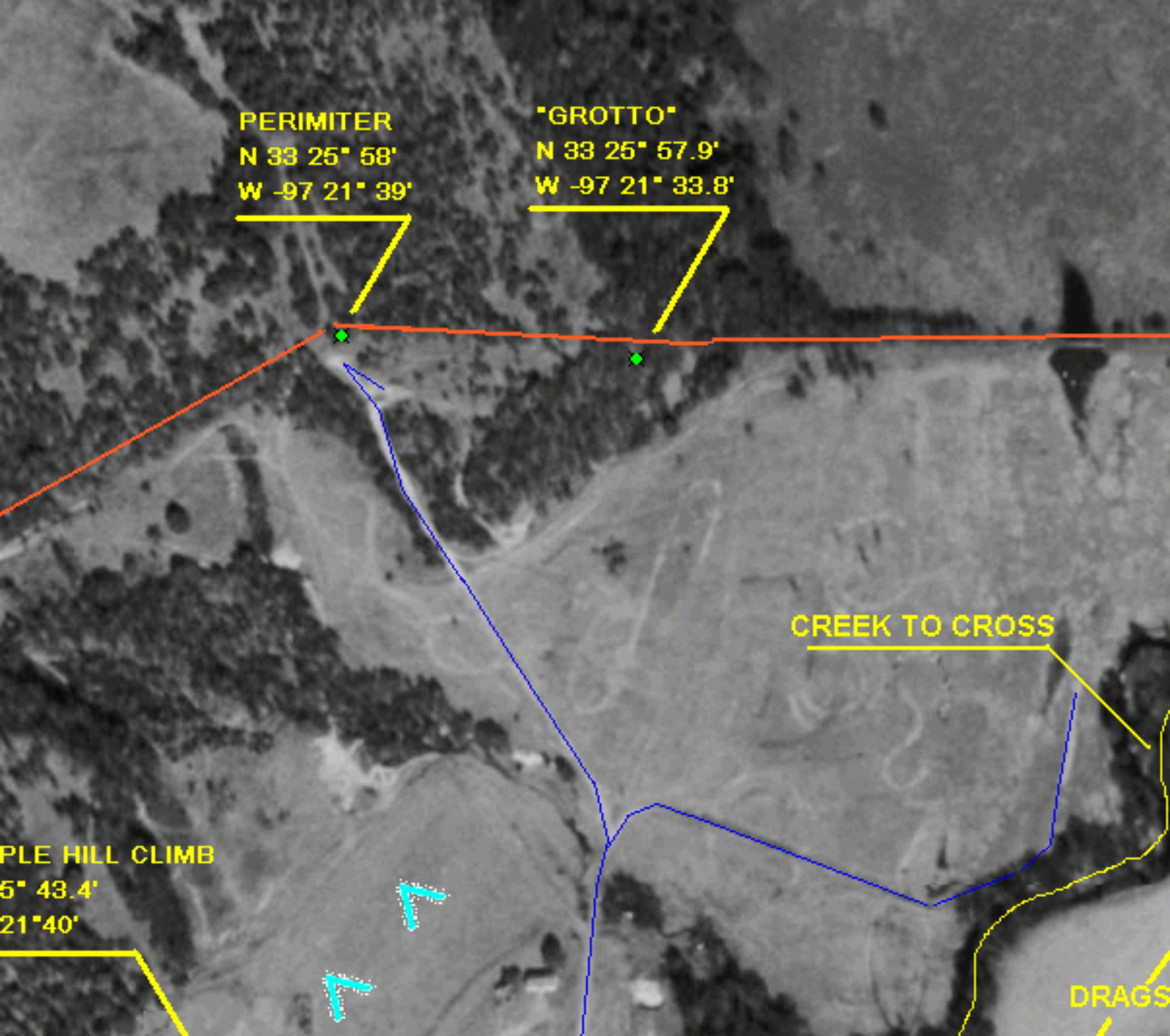
PERIMETER
N 33 25° 58'
W -97 21° 39'

"GROTTO"
N 33 25° 57.9'
W -97 21° 33.8'

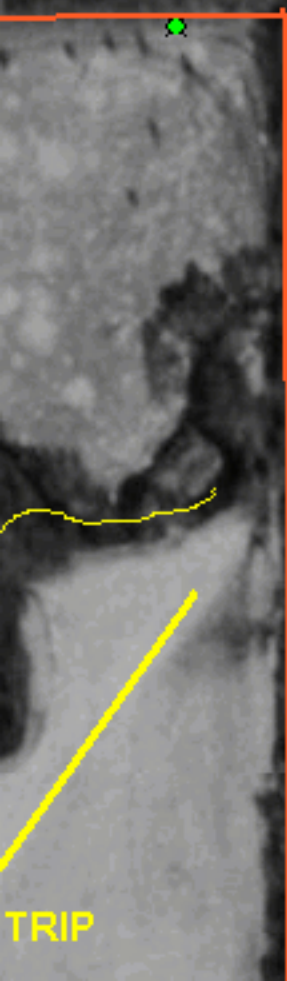
CREEK TO CROSS

PLE HILL CLIMB
5° 43.4'
21° 40'

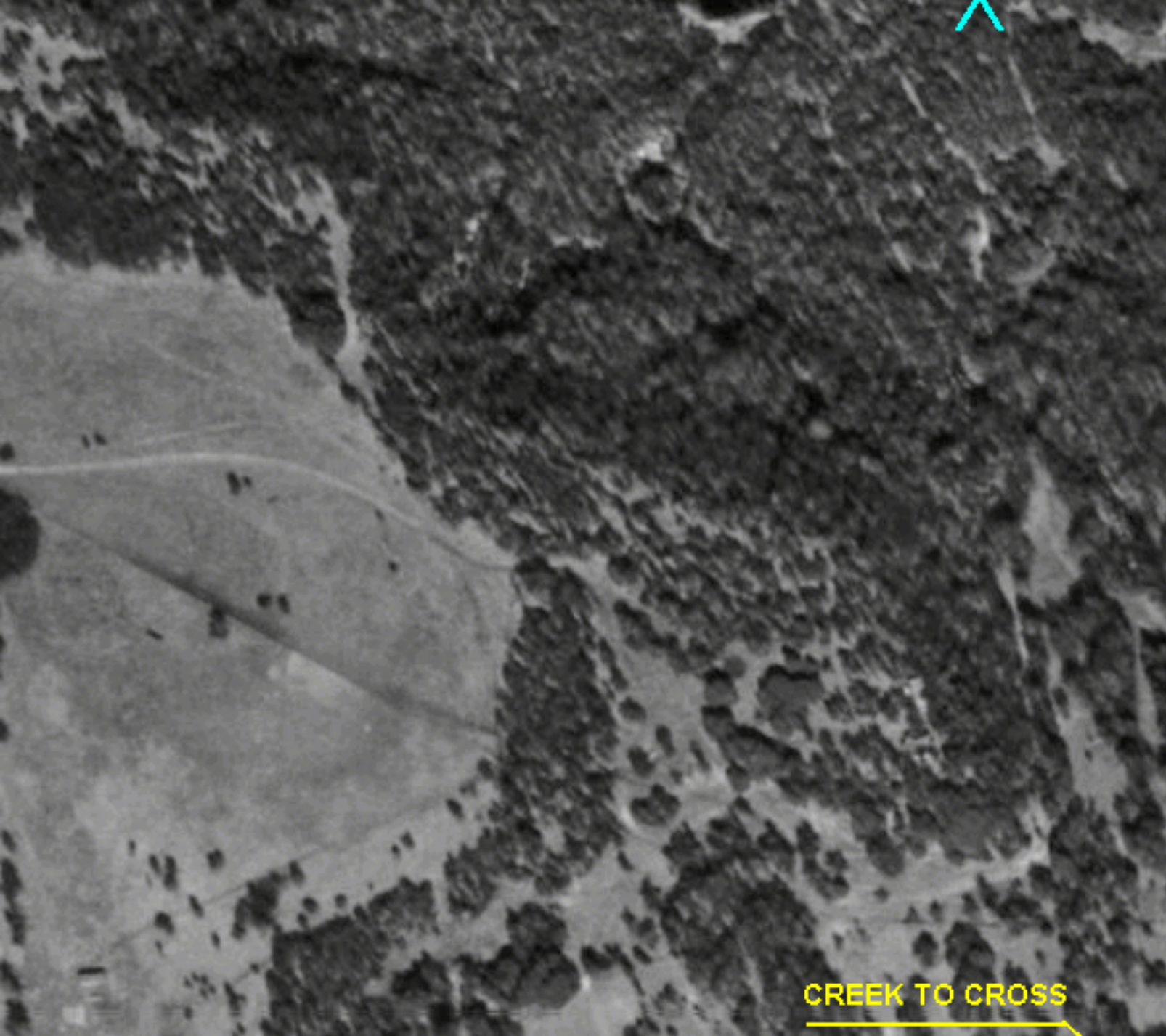
DRAGS



PERIMETER
N 33 25° 58'
W -97 21° 20'



HILL CLIMB (BOT)
N 33 25° 44.7'
W -97 21° 19.5'



CREEK TO CROSS





N 33 25'' 32.8'
W -97 22'' 1.6''

N 33 25'' 21'
W -97 22'' 0''



LAKE

DAM ROAD
N 33 25° 39'
W -97 21° 27'

HILL CLIMB (TOP)

N 33 25° 41.6'

W -97 21° 20.2'

SMALL MUDPIT

N 33 25° 41'

W -97 21° 19'

PERIMITER

N 33 25° 27'

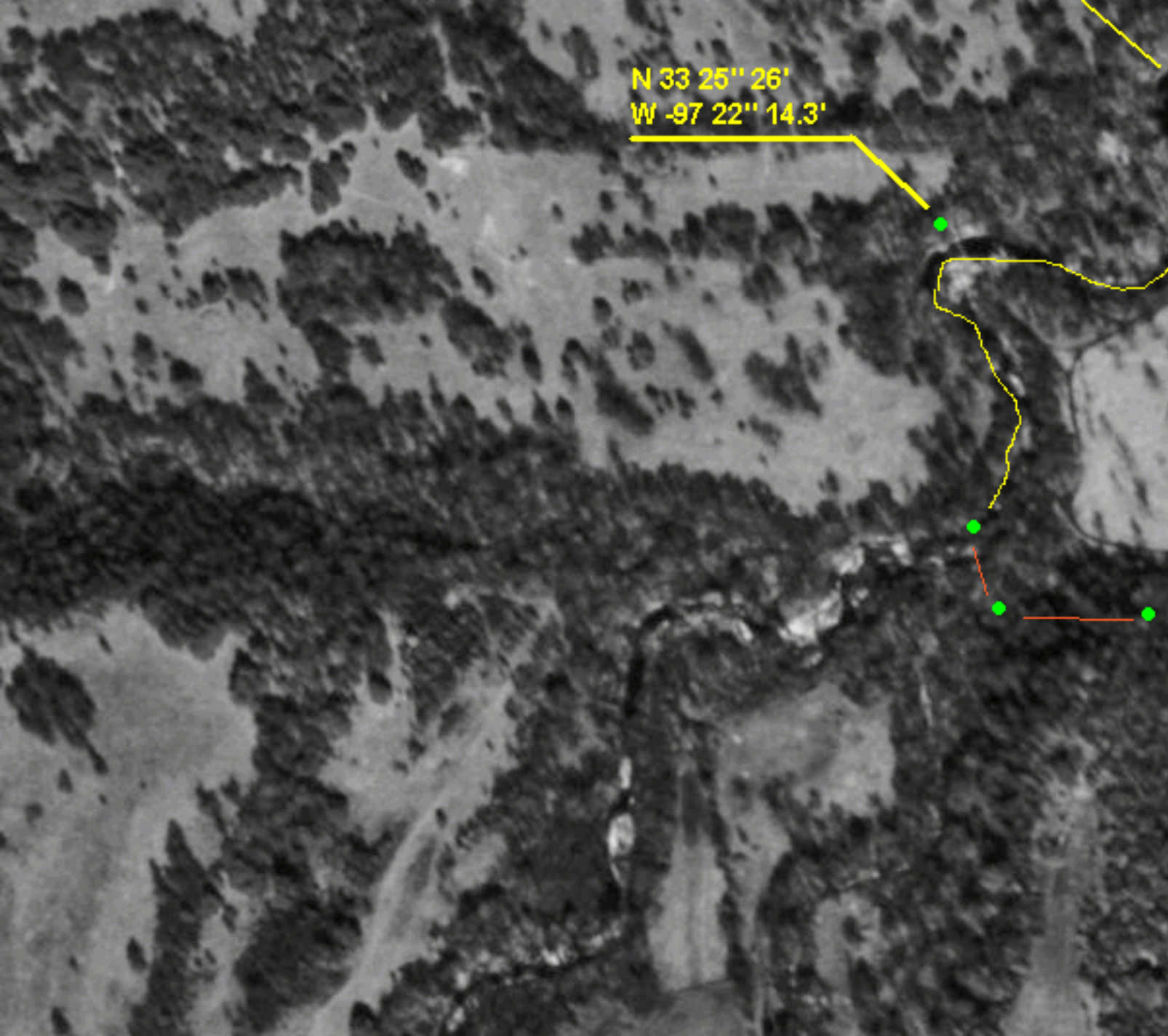
W -97 21° 19'

PERIMITER

N 33 25° 27'

W -97 21° 03'

N 33 25" 26'
W -97 22" 14.3'





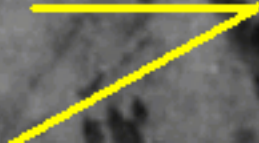
N 33 25° 20'
W -97 21° 58'

BAR
POM



RN
ID

FORK TO SOU
N 38 25° 02'
W -97 21° 32'

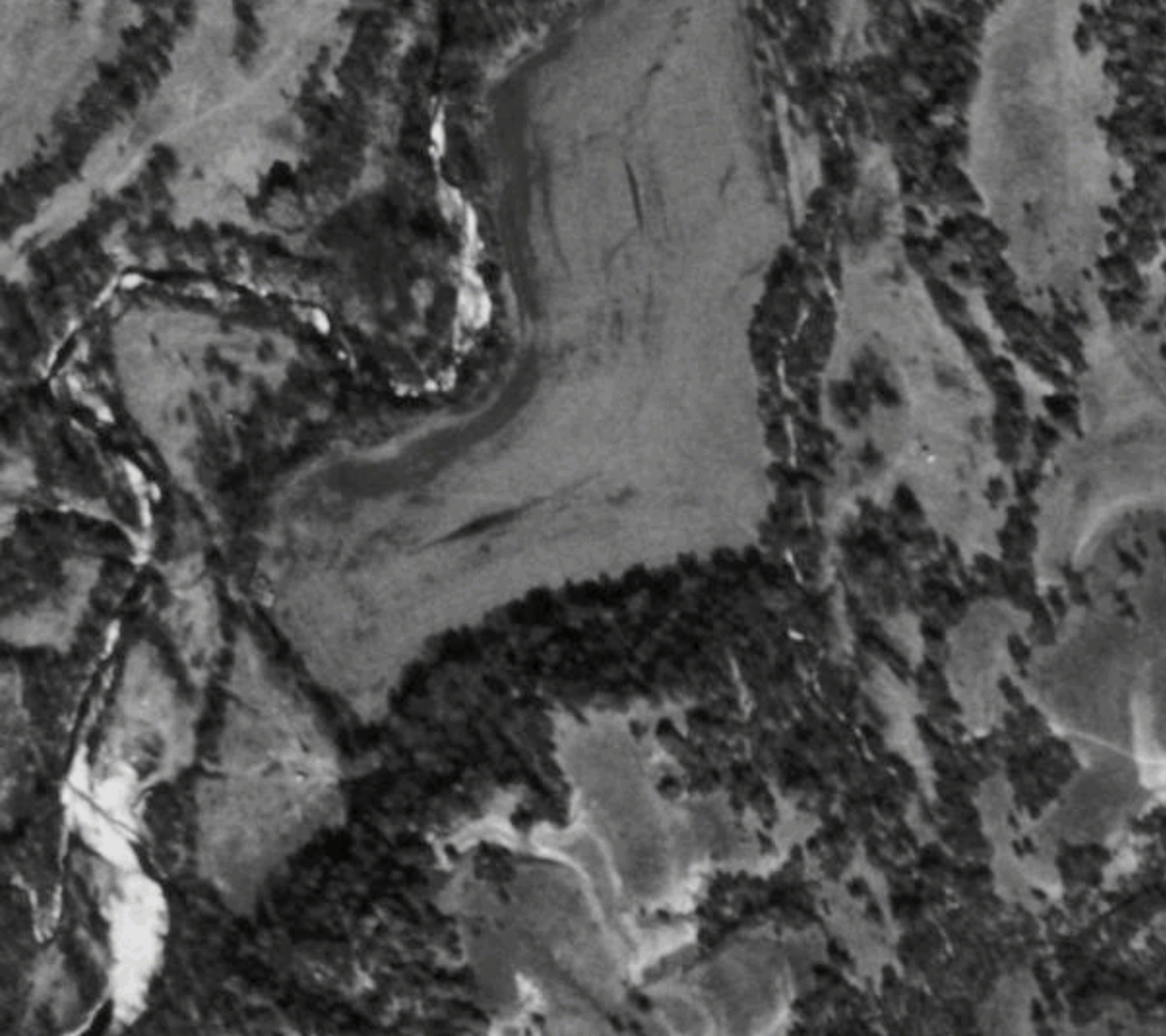


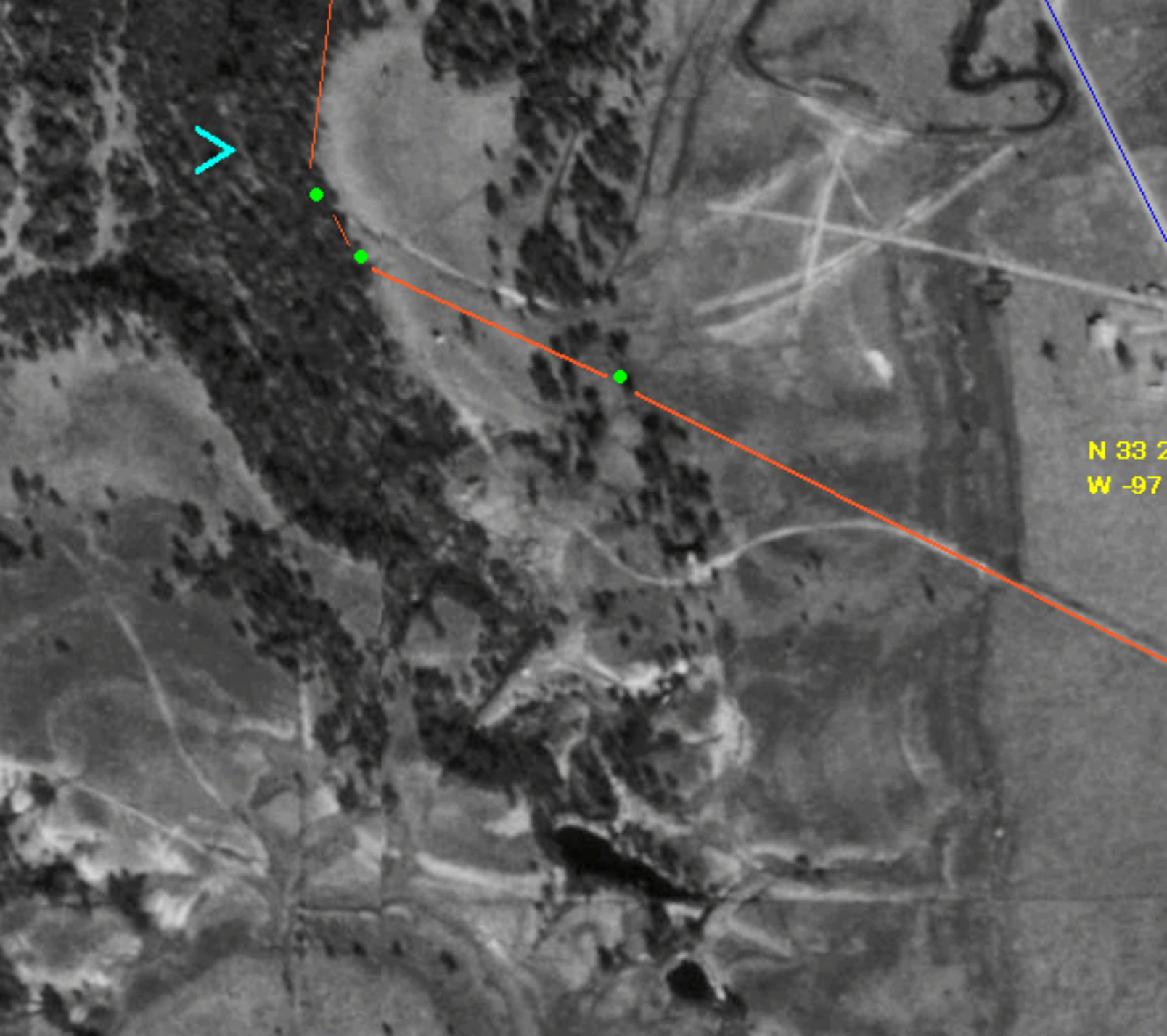
An aerial photograph of a landscape, possibly a construction or mining site. The image is annotated with several colored lines and text labels. A red horizontal line runs across the top, with green dots at its ends. A blue vertical line runs down the left side. A yellow line runs diagonally from the top left towards the center. A yellow line runs diagonally from the top right towards the center. A yellow line runs diagonally from the center towards the bottom right. A green line runs diagonally from the bottom right towards the center. The text 'GRAVEL PITS' is written in yellow and points to a cluster of small, light-colored pits. The text 'HOLE PITS' is written in yellow on the left side. The text 'HIGHWAY 51' is written in green at the bottom right, pointing to a road. The landscape shows a mix of dark, textured ground and lighter, more uniform areas, possibly representing different soil types or construction materials.

GRAVEL PITS

HOLE PITS

HIGHWAY 51





N 33 2
W -97

OFFICE

25° 08'
21° 45'

PERIMETER
N 33 25° 02'
W -97 21° 32'

PERIMETER
N 33 25° 09'
W -97 21° 19'

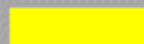
N 33 25° 08'
W -97 21° 21'

ROCKY RIDGE RANCH

OFFROAD ATV/MOTO PARK
DECATUR, TEXAS
940-466-3792



GPS POINTS



GPS COORDINATES



FENCE OR AREA PERIMETER



ELEVATION INCREASE



CAR/TRUCK ROAD