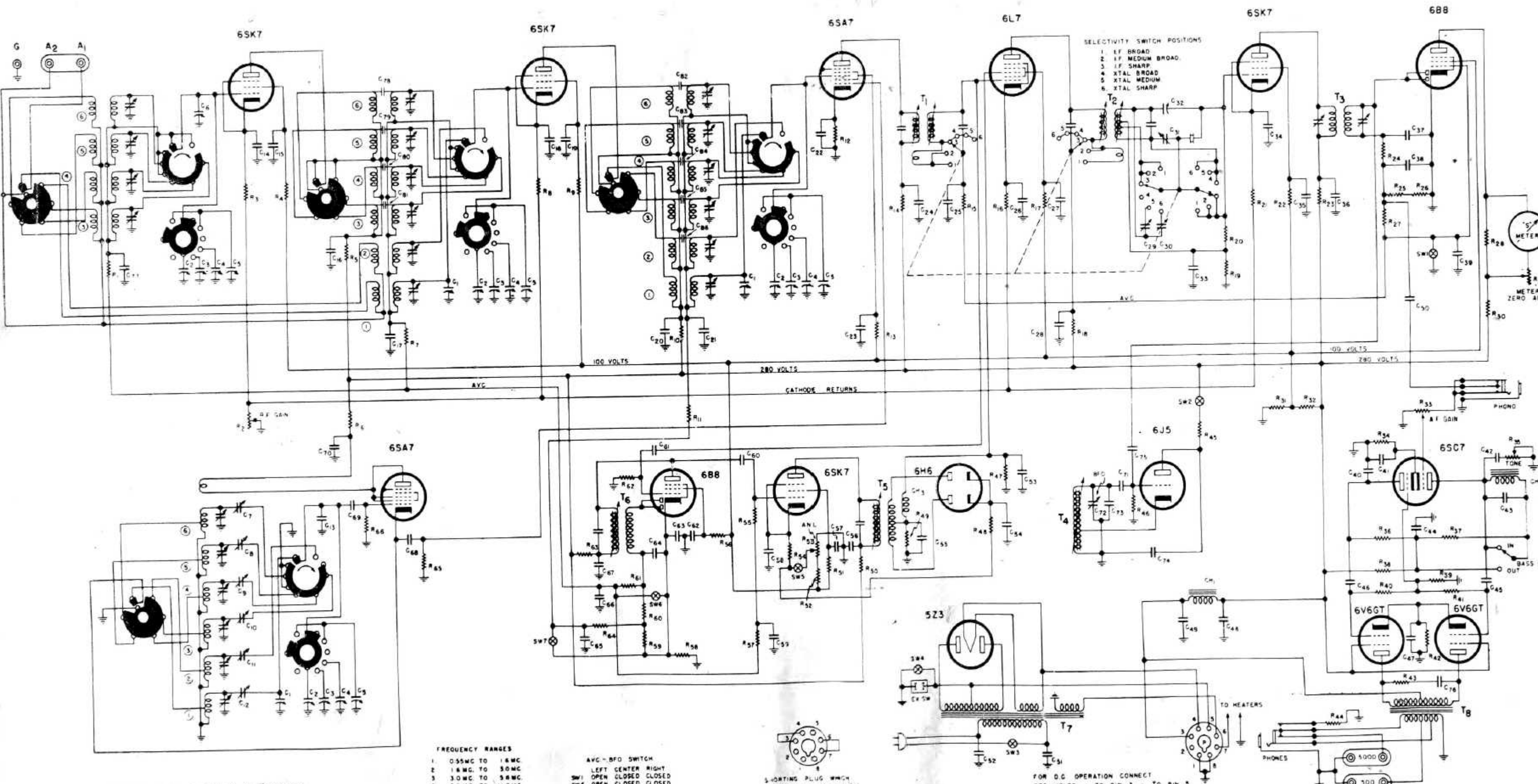


SCHEMATIC DIAGRAM - SUPER SKYRIDER - MODEL SK-28



SELECTIVITY SWITCH POSITIONS

1. LF BROAD
2. LF MEDIUM BROAD
3. LF SHARP
4. XTAL BROAD
5. XTAL MEDIUM
6. XTAL SHARP

FREQUENCY RANGES

1. 0.55MC TO 1.6MC
2. 1.6MC TO 3.0MC
3. 3.0MC TO 5.8MC
4. 5.8MC TO 11.0MC
5. 11.0MC TO 21.0MC
6. 21.0MC TO 43.0MC

AVC - BFO SWITCH

SW1	OPEN	CLOSED	CLOSED
SW6	OPEN	CLOSED	CLOSED
SW7	OPEN	CLOSED	CLOSED
SW2	OPEN	OPEN	CLOSED

SHORTING PLUG WHICH MUST BE IN SOCKET FOR A.C. OPERATION

FOR D.C. OPERATION CONNECT 270 VOLTS + TO PIN 3, - TO PIN 5

NOTE BAND SWITCH IS SHOWN IN NO. 1 POSITION UNLABELED CONDENSERS ACROSS COILS ARE TRIMMERS



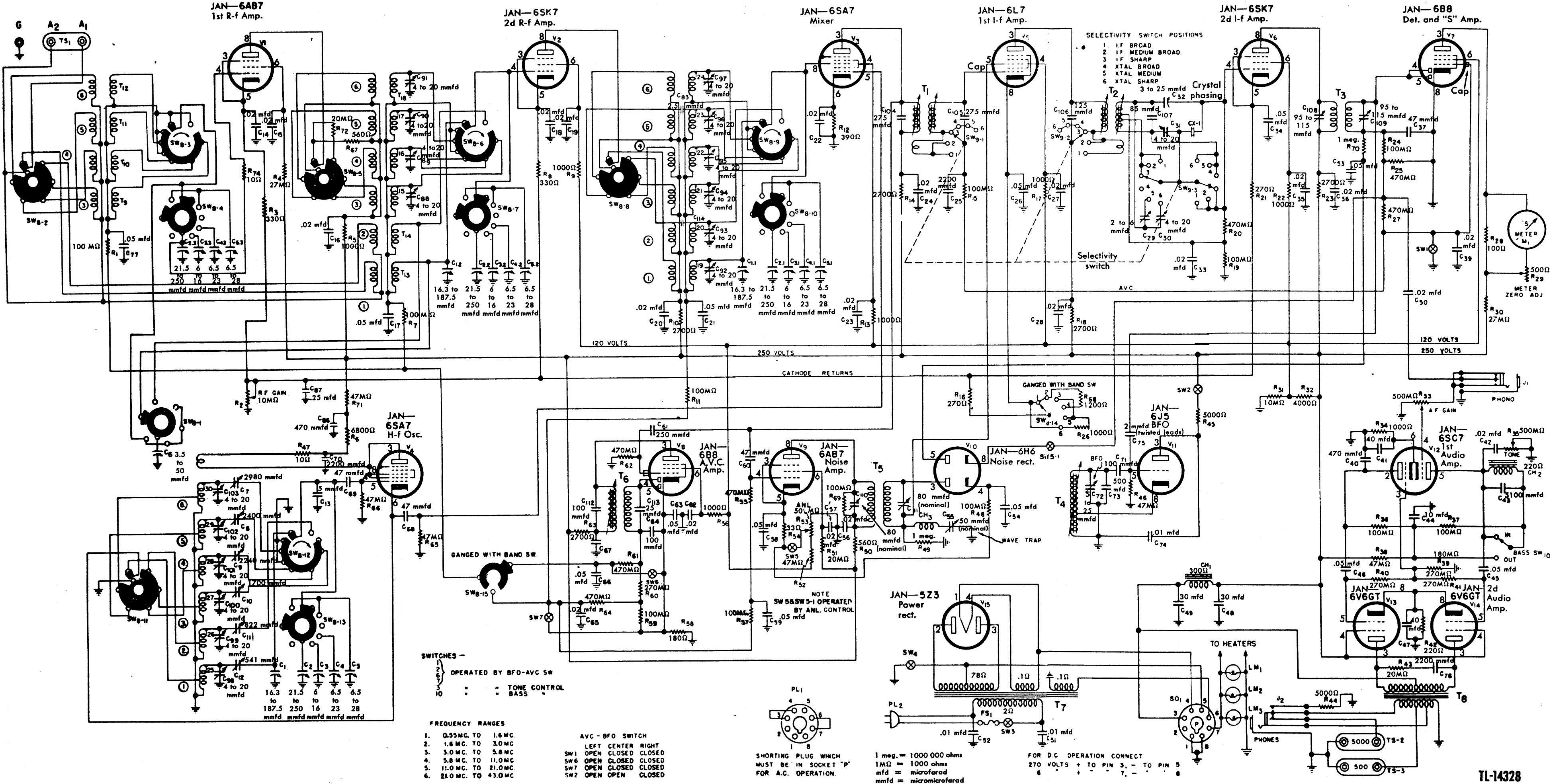


Figure 27. Radio Receiver AN/GRR-2, schematic diagram.



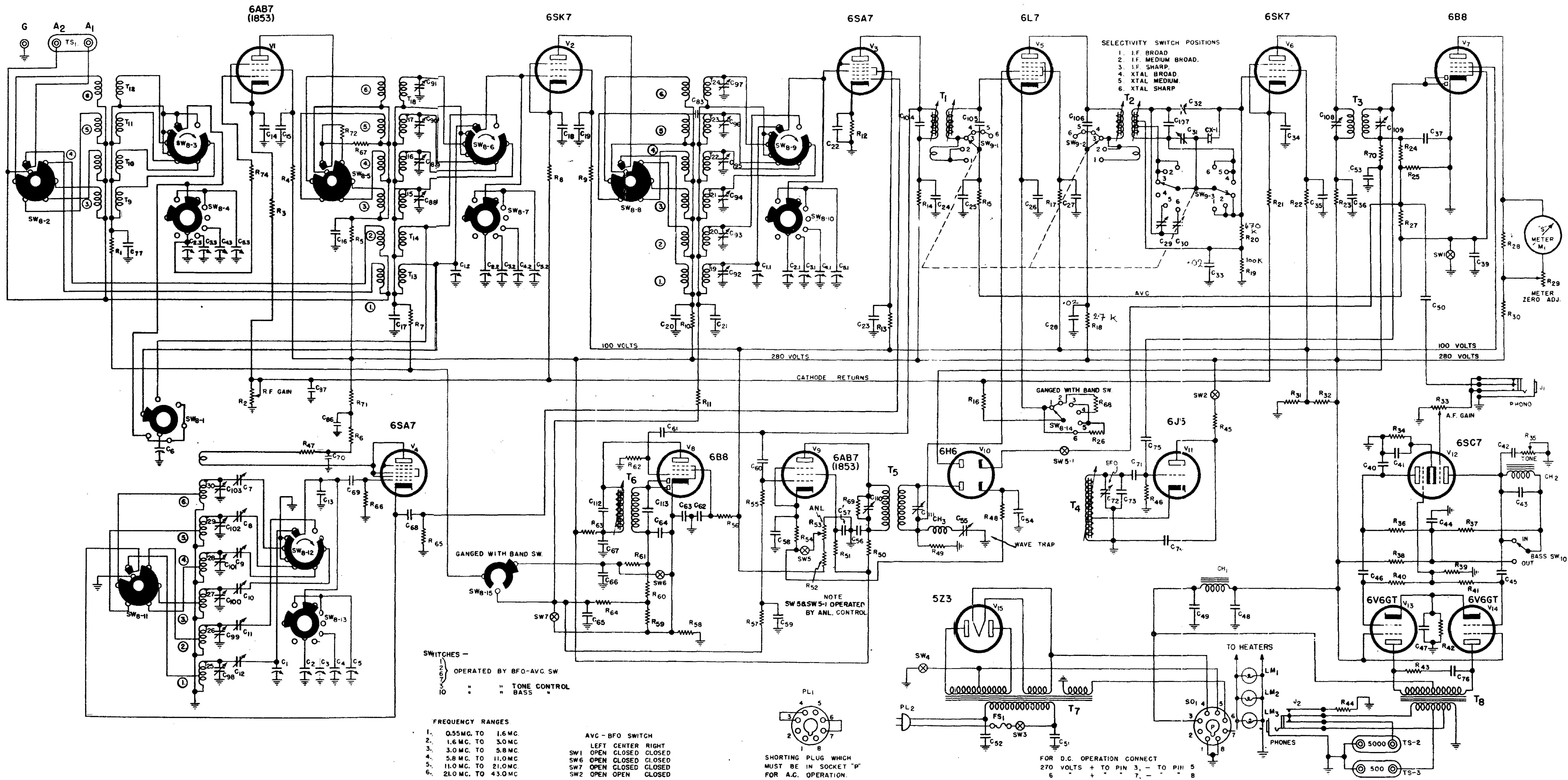


FIG. 13—SX28-A—SCHEMATIC