

KENYON REPLACEMENT TRANSFORMER PRODUCTS

There are 21,500,000 radio receivers now in service.

Many of these sets become defective every year. It is the job of the service man to select and install new parts to replace the defective units in these receivers. Because the Kenyon Transformer Co., Inc. has for years built transformer and reactor units for many of the leading manufacturers of radio receivers, it is in an excellent position to offer dependable transformer and reactor replacements.

The components listed in this catalog are the result of careful design based on complete practical knowledge of radio receiver requirements. Since they represent thoroughly satisfactory performance at a low price, they have found numerous applications in public address, amateur radio, and other branches of the field.

The 20 replacement power units included in this line will service 90% of the receivers now in use. Any dealer or service man who stocks one of each of these transformers will be in a position to repair the power unit of most any receiver or amplifier. A dependable installation is insured by a varnish-vacuum impregnation process which protects the coils against adverse climatic conditions. All power transformers are constructed with an electrostatic shield between the primary and secondaries.

The 70 audio components included in this replacement group will service the audio channels of all radio receivers now in use. These units are all double-dipped in a penetrating high dielectric wax. The coils of the audio transformers and all reactors, as well as the power transformer coils are machine wound to insure uniformity and accuracy. All raw materials used are carefully selected and periodically checked in our laboratories.

Every precaution has been taken in the conception, the design, and the production of these units to make them as dependable as the Kenyon insignia which they bear.

KENYON TRANSFORMER CO., Inc.
840 BARRY STREET, NEW YORK, N. Y.

Copyright May 1935, Kenyon Transformer Co., Inc.

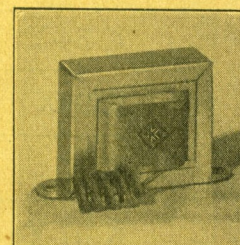


Fig. 1

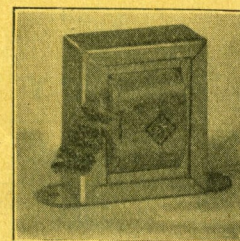


Fig. 2

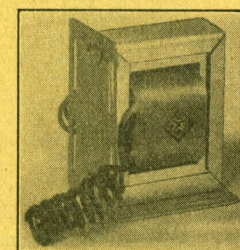


Fig. 3

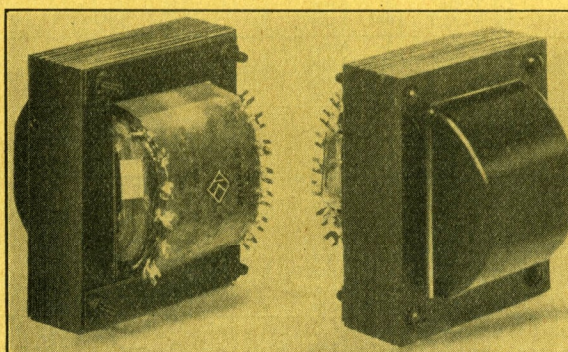


Fig. 4

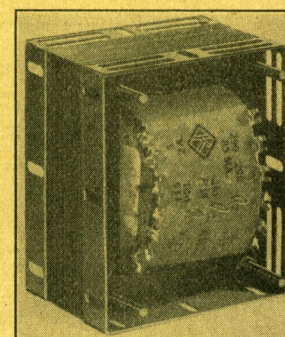


Fig. 5



POWER TRANSFORMERS

HALF SHELL TYPE, (FIG. 4)

Type Number	High Voltage Secondary	Filament Secondaries		DIMENSIONS		List Price
				Base	Mounting	
K-40M	640 v. C.T., 40 M.A.	5.0 Volts 2.5 V. C.T.	2 Amp. 5.5 Amp.	2½x3	2 x2½	\$2.25
K-40	650 v. C.T., 40 M.A.	5.0 Volts 2.5 V. C.T.	2 Amp. 5.5 Amp.	3¼x2½	2¼x2½	\$2.25
K-54	670 v. C.T., 50 M.A.	5.0 Volts 2.5 V. C.T.	2 Amp. 7 Amp.	3¼x2½	2¼x2½	\$2.75
K-54-Y	670 v. C.T., 50 M.A.	5.0 Volts 6.3 V. C.T.	2 Amp. 3 Amp.	3¼x2½	2¼x2½	\$2.75
K-54X	700 v. C.T., 50 M.A.	5.0 Volts 2.5 V. C.T. 2.5 V. C.T.	2 Amp. 5.25 Amp. 1.75 Amp.	3¼x2½	2¼x2½	\$3.00
K-67	700 v. C.T., 75 M.A.	5.0 Volts 2.5 V. C.T.	2 Amp. 9 Amp.	3¼x3¼	2½x3¼	\$3.25
K-67-Y	700 v. C.T., 75 M.A.	5.0 Volts 2.5 V. C.T. 6.3 V. C.T.	3 Amp. 3 Amp. 3 Amp.	3¼x3¼	2½x3¼	\$3.50
K-67-X	700 v. C.T., 75 M.A.	5.0 Volts 2.5 V. C.T. 2.5 V. C.T.	2 Amp. 9 Amp. 3 Amp.	3¼x3¼	2½x3¼	\$3.50
K-87	650 v. C.T., 100 M.A.	5.0 Volts 2.5 V. C.T.	2 Amp. 12 Amp.	3¼x3¼	2½x3¼	\$4.00
K-87-Y	650 v. C.T., 100 M.A.	5.0 Volts 2.5 V. C.T. 6.3 V. C.T.	3 Amp. 3 Amp. 4 Amp.	3¼x3¼	2½x3¼	\$4.25
K-87-X	650 v. C.T., 100 M.A.	5.0 Volts 2.5 V. C.T. 2.5 V. C.T.	2 Amp. 12 Amp. 3 Amp.	3¼x3¼	2½x3¼	\$4.25
K-90	750 v. C.T., 100 M.A.	5.0 Volts 2.5 V. C.T. 2.5 V. C.T.	2 Amp. 4 Amp. 12 Amp.	3¼x3¼	2½x3¼	\$4.50
K-90-Y	750 v. C.T., 100 M.A.	5.0 Volts 2.5 V. C.T. 6.3 V. C.T.	3 Amp. 3 Amp. 4 Amp.	3¼x3¼	2½x3¼	\$4.50
K-92	800 v. C.T., 115 M.A.	5.0 Volts 2.5 V. C.T. 2.5 V. C.T.	3 Amp. 5 Amp. 12 Amp.	4½x3¼	3¼x3	\$5.75
K-A3	850 v. C.T., 165 M.A.	5.0 Volts 2.5 V. C.T. 2.5 V. C.T.	3 Amp. 5 Amp. 14 Amp.	4½x3¼	3¼x3	\$8.00
K-59	1000 v. C.T., 150 M.A.	5.0 Volts 2.5 V. C.T. 2.5 V. C.T.	3 Amp. 5 Amp. 10 Amp.	4½x3¼	3¼x3	\$9.50

UNIVERSAL MOUNTING TYPE, (FIG. 5)

Type Number	High Voltage Secondary	Filament Secondaries		Overall Dimensions	MOUNTING DIMENSIONS		List Price
					Short Side	Long Side	
KR-1	700 v. C.T., 125 M.A.	5.0 Volts 2.5 Volts 2.5 V. C.T.	3 Amp. 3 Amp. 10.5 Amp.	3¼x4½x3¼	1¾ to 2½x1½ to 2¾	1¾ to 2½x1¾ to 3¼	\$5.25
KR-2	580 v. C.T., 85 M.A.	5.0 Volts 1.5 Volts 2.5 V. C.T. 5.0 V. C.T.	2 Amp. 4.2 Amp. 1.75 Amp. 1.5 Amp.	3¼x3¼x2¾	1¾ to 2½x ¾ to 2¾	1¾ to 2½x1¾ to 3¼	\$3.75
KR-3	650 v. C.T., 60 M.A.	5.0 Volts 2.5 V. C.T. 2.5 V. C.T.	2 Amp. 1.5 Amp. 8.5 Amp.	3¼x3¼x2¾	1¾ to 2½x ¾ to 2¾	1¾ to 2½x1¾ to 3¼	\$3.75
KR-4	580 v. C.T., 85 M.A.	5.0 Volts 2.5 V. C.T. 2.5 V. C.T. 5.0 V. C.T.	2 Amp. 1.75 Amp. 7 Amp. 1.5 Amp.	3¼x3¼x2¾	1¾ to 2½x ¾ to 2¾	1¾ to 2½x1¾ to 3¼	\$3.75
KR-5	1100 v. C.T., 150 M.A.	7.5 V. C.T. 7.5 V. C.T. 1.5 Volts 2.5 V. C.T.	2.5 Amp. 2.5 Amp. 6.3 Amp. 10 Amp.	3¼x4½x5	3¼ to 3½x1½ to 2¾	3¼ to 3½x1¾ to 3¼	\$9.00

All power transformers are supplied with 115 Volt 50/60 cycles primaries unless otherwise specified.

- For 230 volt, 60 cycles primary, add 25% to list price.
- For 115 volt, 25 cycles primary, add 60% to list price.
- For 230 volt, 25 cycles primary, add 100% to list price.



AMPLIFIER COMPONENTS

CLASS A INPUT TRANSFORMERS (FIG. 1 AND FIG. 2)

Type	Size		List Price
KA-114	C	Input transformer, 1 plate (a) to 1 grid. Ratio (c) 1:4	\$1.90
KA-114M	C	Input transformer, 1 plate (a) or single button microphone to grid, 1:4 ratio (c) (For use in transceiver)	2.25
KA-115	C	Input transformer, 1 plate (a) to 2 grids. Ratio (c) 1:2	1.90
KA-116	C	Input transformer, 1 plate (a) to 2 grids. Ratio (c) 1:2 (split secondary with 4 leads)	1.90
KA-154	B	Input transformer, midget type, similar to KA-114, requires less chassis space	1.50
KA-155	B	Input transformer, midget type, similar to KA-115, requires less chassis space	1.50
KR-119	C	Same as KA-114, upright mounting requires less chassis space	1.90
KR-115	C	Same as KA-115, upright mounting, requires less chassis space	1.90
KA-34	D	Same as KA-114, has better low frequency response	2.25
KA-35	D	Same as KA-115, has better low frequency response	2.25
KA-36	D	Same as KA-116, has better low frequency response	2.25
KA-23	E	Push-pull plates (a) to push-pull grids. Ratio (c) 1:1½	3.00
KPG	C	High impedance pickup to 1 grid	2.00
KSMG	C	Single button microphone to 1 grid	2.00
KMG	C	Double button microphone to 1 grid	2.00
KRG	C	Ribbon microphone to 1 grid	2.25
KVL	C	Velocity ribbon microphone to 500 ohms or 200 ohms	2.25
KA-55	E	Power detector plate to push-pull grids	3.00

Notes:

1—(a) indicates plates of such tubes as 55, 56, 76, 27, 37, 864, 30, 01A, 26, 77 (triode connected), 57 (triode connected), 6C6 (triode connected) or any similar tube having plate resistance of approximately 10,000 ohms.

2—(c) indicates turns ratio total primary to total secondary in the case of coupling transformers working from single plate to single grid or from push-pull plates to push-pull grids. In the case of a single plate working to push-pull grids, the turn ratio is given as total primary to one-half secondary.

CLASS A OUTPUT TRANSFORMERS (FIG. 1)

KO-381	C	Single 38 plate to voice coil	1.50
KO-382	C	Push-pull 38 plates to voice coil	1.75
KO-451	C	Single 45 or 71A plate to voice coil	1.50
KO-452	C	Push-pull 45 plates to voice coil	1.50
KO-471	C	Single pentode plate (b) to voice coil	1.50
KO-472	C	Push-pull pentode plates (b) to voice coil	1.75
KO-482	C	Push-pull 48 plates to voice coil	1.50
KA-32	E	Push-pull 2A3 plates to 8 ohms and 4 ohms	2.25
KPO	C	Single triode plate (a) to 500 ohms or 200 ohms	1.75
KPM	C	Single plate (a) to magnetic speaker	1.50
KPPM	C	Push-pull plates (a) to magnetic speaker	1.50
381M	B	Single 38 plate to voice coil	1.25
382M	B	Push-pull 38 plates to voice coil	1.35
451M	B	Single 45 plate to voice coil	1.25
452M	B	Push-pull 45 plates to voice coil	1.25
471M	B	Single pentode plate (b) to voice coil	1.25
472M	B	Push-pull pentode plates (b) to voice coil	1.35

Notes:

1—Items 381M to 482M are similar to KO-381 to KO-482 inclusive except that they are smaller and are intended for use with midget speakers.

2—(b) indicates pentode plate of such tubes as 2A5, 42, 47, 59, 89, 33 or similar tube requiring plate load of approximately 7,000 ohms (per tube).

UNIVERSAL MOUNTING AUDIO TRANSFORMERS (FIG. 3)

KU-14	C	Input transformer, 1 plate (a) to 1 grid Ratio (c) 1:4	\$2.15
KU-15	C	1 plate (a) to 2 grids. Ratio (c) 1:2	2.15
KU-16	C	1 plate (a) to 2 grids. Ratio (c) 1:2 (split secondary brought out to 4 leads)	2.15
KU-81	C	Single 38 plate to voice coil	2.00
KU-82	C	Push-pull 38 plates to voice coil	2.00
KU-71	C	Single pentode plate (b) to voice coil	1.75
KU-51	C	Single 45 or 71A plate to voice coil	1.75
KU-72	C	Push-pull pentode plates (b) to voice coil	2.00
KU-52	C	Push-pull 45 or 71A plates to voice coil	1.75
KUO	C	Universal output for single triode or pentode plate; push-pull triode or pentode plates, to low impedance secondary tapped from .1 to 29 ohms	1.75
KUMO	C	Universal output for single triode or pentode plate; push-pull triode or pentode plates, to tapped high impedance line for connection to one or more magnetic speakers	1.75



CLASS B AND CLASS AB INPUT TRANSFORMERS (FIG. 1)

Type	Size		List Price
KR-46	D	Driver 46 plate to two 46 grids	2.50
KR-49	D	Driver 49 plate to two 49 grids	2.50
KR-53	D	Driver 53 plate to two 53 grids	2.50
KR-59	D	Driver 59 plate to two 59 grids	2.50
KR-79	D	Driver 89 plate to two 79 grids	2.50
KR-19	A	Driver 30 plate to 19 grids. (Midget type for use in transceiver)	1.50
KR-45	C	Driver 56 plate (a) to Class AB 45's or to Class AB 2A3's	2.50

CLASS B OUTPUT TRANSFORMERS (FIG. 1)

KR-462	D	Push-pull 46 plates to 8 ohms and 4 ohms	2.50
KR-492	D	Push-pull 49 plates to 8 ohms and 4 ohms	2.50
KR-532	D	Push-pull 53 plates to 8 ohms and 4 ohms	2.50
KR-592	D	Push-pull 59 plates to 8 ohms and 4 ohms	2.50
KR-792	D	Push-pull 79 plates to 8 ohms and 4 ohms	2.50
KR-892	D	Push-pull 89 plates to 8 ohms and 4 ohms	2.50
KR-46M	D	Push-pull 46 plates to 4000 ohms	2.50
KR-49M	D	Push-pull 49 plates to 5000 ohms	2.50
KR-53M	D	Push-pull 53 plates to 4000 ohms	2.50
KR-59M	D	Push-pull 59 plates to 4000 ohms	2.50
KR-79M	D	Push-pull 79 plates to 4000 ohms	2.50
KR-19M	A	Push-pull 19 plates to headphones. (Midget type for use in transceiver)	1.50

FILTER AND AUDIO CHOKES (FIG. 1)

KC-40	EW	Filter choke, 1 henry, 250 M.A. Resistance 40 ohms D.C.	2.50
KC-90	EW	Filter choke, 8 henries, 165 M.A. Resistance 90 ohms D.C.	2.50
KC-91	EW	Class B input choke, max. D.C. 165 M.A. Resistance 92 ohms D.C.	2.50
KC-200	C	Filter choke, 20 henries, 65 M.A. Resistance 200 ohms D.C.	1.25
KC-320	C	Filter choke, 15 henries, 40 M.A. Resistance 320 hms D.C.	1.25
KC-350	DW	Filter choke, 30 henries, 75 M.A. Resistance 350 ohms D.C.	2.00
KC-800	C	Filter choke, 30 henries, 25 M.A. Resistance 800 ohms D.C.	1.25
KAC	E	Center tapped high impedance plate choke, Resistance 10,000 ohms D.C.	3.00
KOC	B	Detector plate filter choke, Max. D.C. 2 M.A. Resistance 6,000 ohms D.C.	2.00
KC-190	B	Filter choke, 8 henries, 40 M.A. Resistance 190 ohms D.C. for Universal AC-DC Receivers	1.00
KC-300	B	Filter choke, 15 henries, 30 M.A. Resistance 300 ohms D.C. for Universal AC-DC Receivers	1.00
KC-450	B	Filter choke, 10 henries, 25 M.A. Resistance 450 ohms D.C. for Universal AC-DC Receivers	1.00
KC-510	B	Filter choke, 20 henries, 30 M.A. Resistance 510 ohms D.C. for Universal AC-DC Receivers	1.00

FILAMENT AND PLATE TRANSFORMERS (FIG. 1)

K-5	D	Filament transformer, Pri. 115 Volts, Secondary 5 Volts at 4 amps.	1.75
K-6	C	Filament transformer, Pri. 115 Volts, Secondary 2.5 Volts at 6 amps.	1.50
K-6.3	D	Filament transformer, Pri. 115 Volts, Secondary 6.3 Volts at 2.5 amps.	1.75
K-7.5	D	Filament transformer, Pri. 115 Volts, Secondary 7.5 Volts at 3 amps.	1.75
K-10	D	Filament transformer, Pri. 115 Volts, Secondary 2.5 Volts at 10 amps.	1.75
KAT		For use with full wave vibrator rectifier to deliver 180 Volts D.C.-capacity of winding 60 M.A.	2.25
KBT	DW	Plate transformer for B eliminator. Pri. 115 Volts, Secondaries: 500 Volts C.T., 50 M.A., 5 Volts 2 amps	2.25
KTT	D	Multiple winding filament transformer, modernizes previous models of standard tube testers. Secondary voltages available: 1.1, 1.5, 2, 2.5, 3.3, 5, 6.3, 7.5, 12, 15, 25, 30 volts	3.00
K45C	D	Bias transformer to supply 60-70 volts D.C. at approximately 30 M.A. when used with half wave rectifier	2.50

	TABLE OF DIMENSIONS				
	SIZE	H	W	D	MOUNTING
	A	1 ³ / ₈ "	1 ³ / ₄ "	1 ³ / ₈ "	2"
	B	1 ⁵ / ₈ "	2"	1 ³ / ₈ "	2 ³ / ₈ "
	C	2"	2 ³ / ₈ "	1 ⁵ / ₈ " To 1 ³ / ₄ "	2 ³ / ₄ "
	D	2 ¹ / ₄ "	2 ³ / ₄ "	1 ³ / ₄ " To 1 ⁷ / ₈ "	3 ³ / ₈ "
	DW	2 ¹ / ₄ "	2 ³ / ₄ "	2 ¹ / ₄ "	3 ¹ / ₂ "
	E	2 ¹ / ₂ "	3"	2"	3 ¹ / ₂ "
	EW	2 ¹ / ₂ "	3"	2 ¹ / ₂ "	3 ¹ / ₂ "

GUARANTY

All Kenyon Transformers are guaranteed against defects in materials and workmanship for a period of ninety days from the time of sale. Inoperative transformers should be returned **pre-paid** to our factory, where they will be inspected and, if found defective from the above mentioned causes, will be replaced without charge.

KENYON TRANSFORMER CO., INC., NEW YORK, N. Y.